

# Key Investor Information

This document provides you with key investor information about this fund. It is not marketing material. The information is required by law to help you understand the nature and the risks of investing in this fund. You are advised to read it so you can make an informed decision about whether to invest.

## SVS Church House UK Equity Growth Fund A Units Income [ISIN: GB0009199240] A Units Accumulation [ISIN: GB00B11DPN28]

The Authorised Fund Manager of the Fund is Smith & Williamson Fund Administration Limited, trading as St Vincent St Fund Administration, part of the Smith & Williamson group.

### Objectives and investment policy

The aim of the Fund is to provide capital growth over the long term (at least 5 years). The Fund will invest at least 80% in shares of UK companies (those incorporated or domiciled in the UK).

The focus of the Fund is on larger companies with a market capitalisation of at least £1bn at the time of purchase.

The Fund may also invest up to 20% in:

- other assets
- fixed interest securities (including floating rate notes, index linked or convertible fixed interest securities)
- shares of companies with a market capitalisation lower than £1bn
- non-UK companies
- money market instruments and cash

Accumulation Units: Any income the Fund generates will be reinvested.

Income Units: Any income the Fund generates will be paid out to you.

You can buy and sell units on any working day in London.

The Fund is actively managed, which means that the manager has discretion over the composition of its portfolio, and the Fund is not tracking a benchmark nor is the Fund constrained by the value, price or components of a benchmark or any other aspect. The Fund is also not aiming to match or exceed the return of any benchmark.

For full investment objectives and policy details please refer to the prospectus.

### Risk and reward profile

The Risk and Reward Indicator table demonstrates where the Fund ranks in terms of its potential risk and reward. The higher the rank the greater the potential reward but the greater the risk of losing money. It is based on past data, may change over time and may not be a reliable indication of the future risk profile of the Fund. The shaded area in the table below shows the Fund's ranking on the Risk and Reward Indicator.

Typically lower rewards,  
lower risk

Typically higher rewards,  
higher risk



- The Fund is in a higher category because the price of its investments have risen or fallen frequently and more dramatically than some other types of investment. The category shown is not guaranteed to remain unchanged and may shift over time. Even the lowest category does not mean a risk-free investment.
- The price of the Fund and any income from it can go down as well as up and is not guaranteed. Investors may not get back the amount invested. Past performance is not a guide to future performance.
- The Fund is entitled to use derivative instruments for EPM. Derivatives may not achieve their intended purpose. Their prices may move up or down significantly over relatively short periods of time which may result in losses greater than the amount paid. This could adversely impact the value of the Fund.
- The organisation from which the Fund buys a derivative may fail to carry out its obligations, which could also cause losses to the Fund.
- The Fund may invest in securities not denominated in sterling, the value of your investments may be affected by changes in currency exchange rates.
- For full details on risk factors for this Fund, please refer to the prospectus.

## Charges

The charges you pay are used to pay the costs of running the Fund, including the costs of marketing and distributing it. These charges reduce the potential growth of your investment.

### One-off charges taken before or after you invest

Entry charge	0.00%
Exit charge	0.00%

These are the maximum charges that we might take out of your money before it is invested and before we pay out the sale proceeds of your investment. In some cases, you might pay less and you should speak to your financial adviser about this.

### Charges taken from the Fund over a year

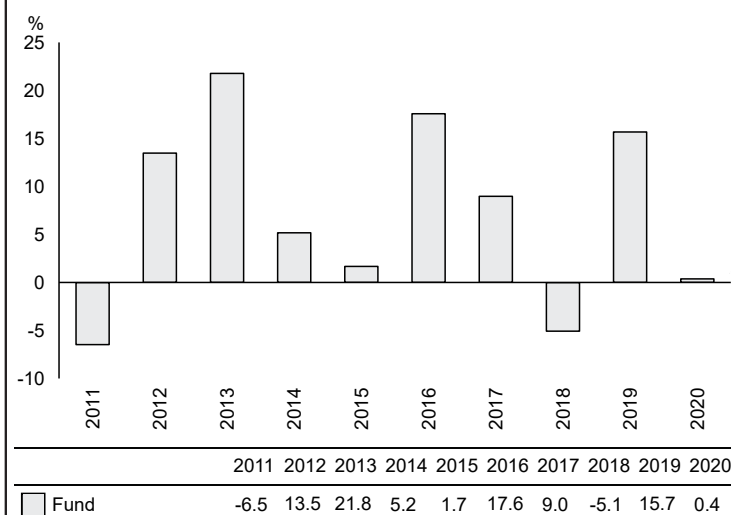
Ongoing charges	1.56%
-----------------	-------

### Charges taken from the Fund under specific conditions

Performance fee	NONE
-----------------	------

- The ongoing charges figure is based on the last year's expenses and may vary from year to year. It excludes the costs of buying or selling assets for the Fund (unless these assets are shares of another fund).
- Previously, the Ongoing Charges Figure (OCF) included expenses incurred by underlying holdings of collective investment schemes in relation to the Fund (the synthetic OCF). Following guidance issued by the Investment Association on 2 July 2020, the synthetic OCF calculation has been expanded to include investment trusts.
- The Fund's annual report for each financial year will include detail on the exact charges made.
- The ongoing charges figure is for the year ending 31/03/2021.
- For further information about charges, please refer to relevant sections in the Fund's prospectus.

## Past performance



Source: FE fundinfo 2021

- You should be aware that past performance is not a guide to future performance.
- Fund launch date: 06/07/2000.
- Share/unit class launch date: 01/04/2006.
- Performance is calculated in GBP.
- All charges and fees, except any entry, exit or switching charges, have been included within the performance calculation.
- On 2 December 2019 the name of the Fund changed from SVS Church House UK Managed Growth Fund to SVS Church House UK Equity Growth Fund.
- The FTSE 100 Index and the IA UK All Companies Shares sector have been selected as comparator benchmarks as they best reflect the asset allocation of the Fund.

## Practical information

- The Trustee of the Fund is NatWest Trustee & Depositary Services Limited.
- You can get further information on the Fund, including how to buy and sell units, from the prospectus and the latest annual and half-yearly reports and accounts, which are in English only. You can get copies of these free of charge, by telephoning 0141 222 1151.
- The latest unit prices are available on [www.trustnet.com](http://www.trustnet.com) or by telephoning 0141 222 1151.
- UK tax laws may impact your own tax position.
- Smith & Williamson Fund Administration Limited may be held liable solely on the basis of any statement contained in this document that is misleading, inaccurate or inconsistent with the relevant parts of the prospectus for the UK UCITS.
- There are other unit classes available in this Fund. You can convert between unit classes by writing to Transfer Agency, 206 St Vincent Street, Glasgow G2 5SG.
- Details of the Smith & Williamson Fund Administration Limited remuneration policy are available on <http://smithandwilliamson.com/footer-pages/remuneration-code-disclosure> and a copy will be made available free of charge on request.

The Fund is authorised in the UK and regulated by the Financial Conduct Authority.

Smith & Williamson Fund Administration Limited is authorised in the UK and regulated by the Financial Conduct Authority.

This Key Investor Information is accurate as at 30/04/2021.